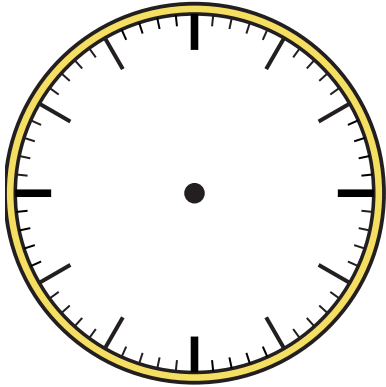




Zeichne den Stunden- und den Minutenzeiger auf die Uhr, sodass er die angezeigte Zeit darstellt.

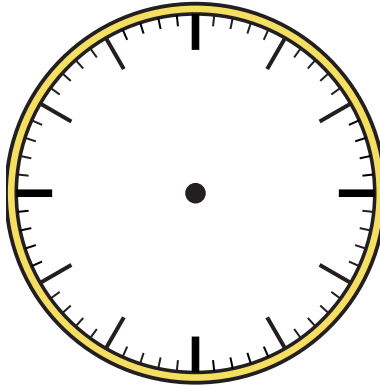
1)

11:55



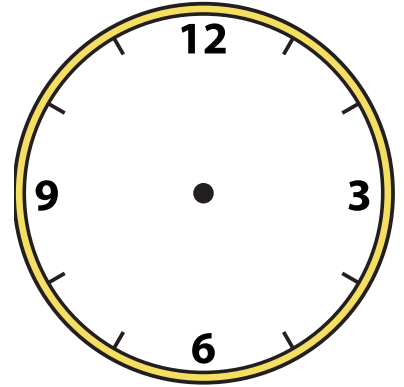
2)

7:15



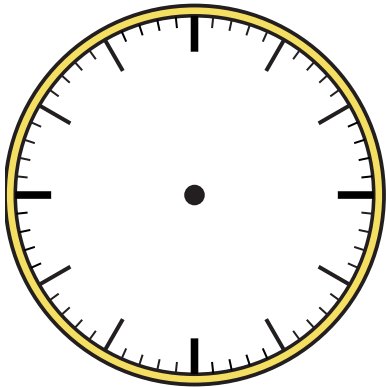
3)

8:15



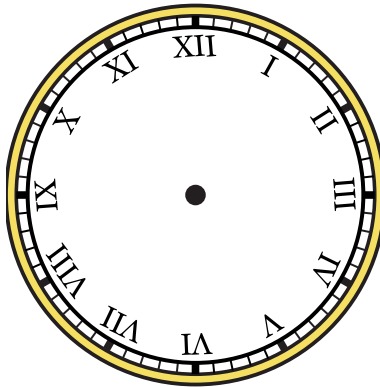
4)

10:15



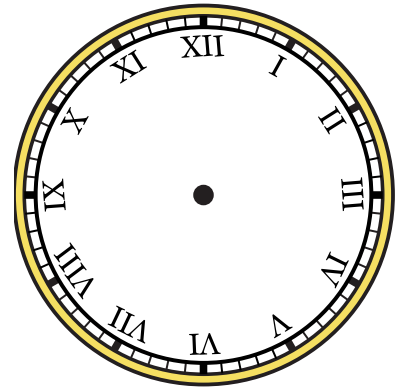
5)

8:25



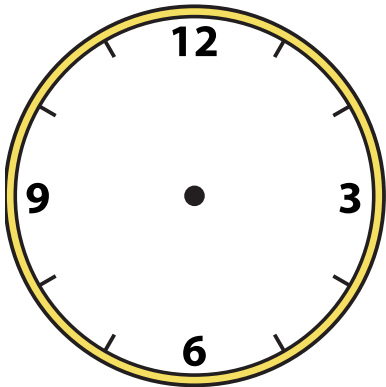
6)

2:05



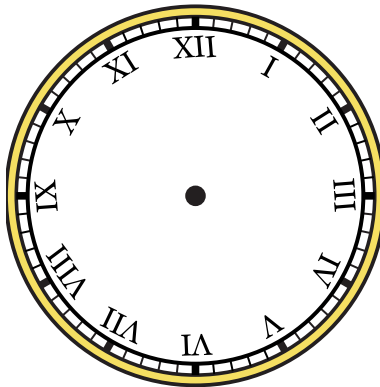
7)

12:40



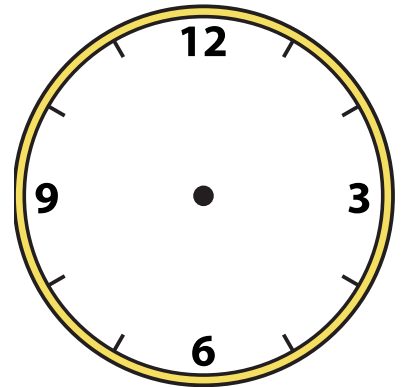
8)

4:15



9)

12:50





Zeichne den Stunden- und den Minutenzeiger auf die Uhr, sodass er die angezeigte Zeit darstellt.

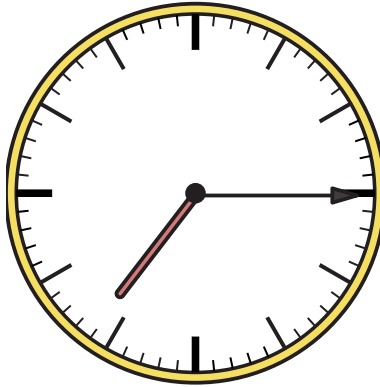
1)

11:55



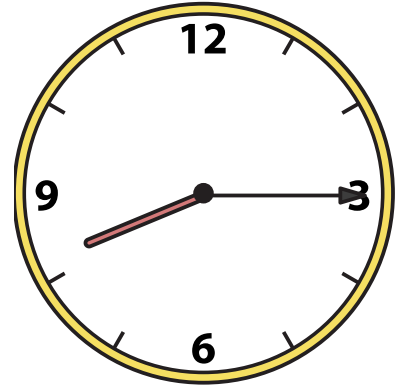
2)

7:15



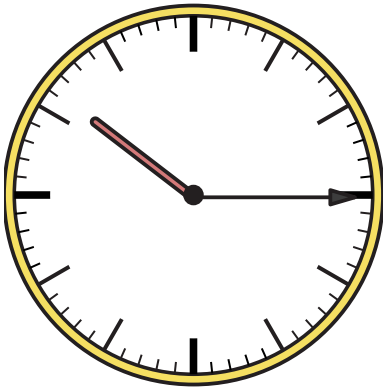
3)

8:15



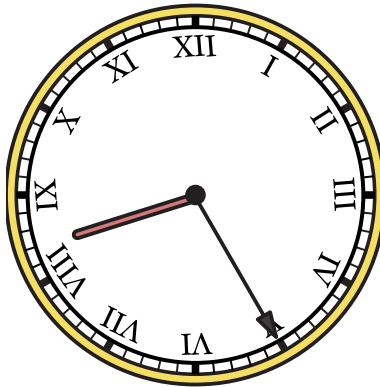
4)

10:15



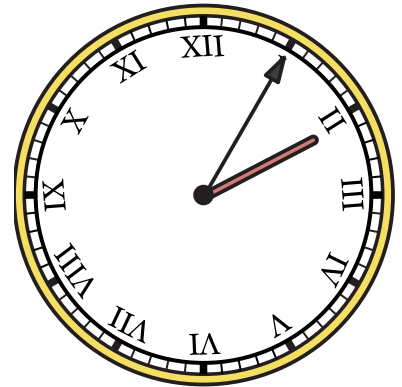
5)

8:25



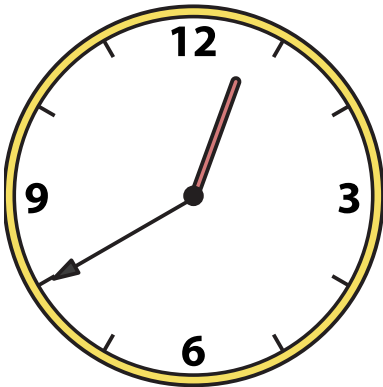
6)

2:05



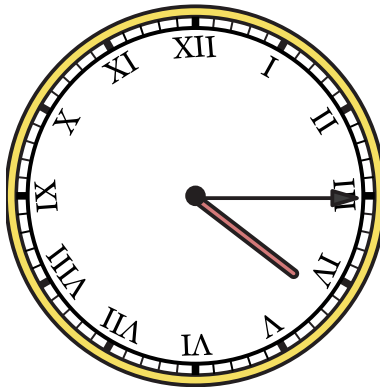
7)

12:40



8)

4:15



9)

12:50

