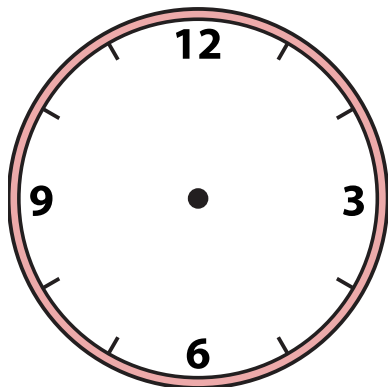


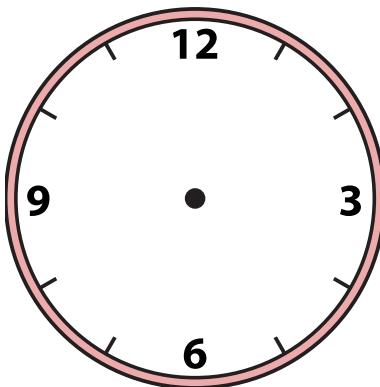


Zeichne den Stunden- und den Minutenzeiger auf die Uhr, sodass er die angezeigte Zeit darstellt.

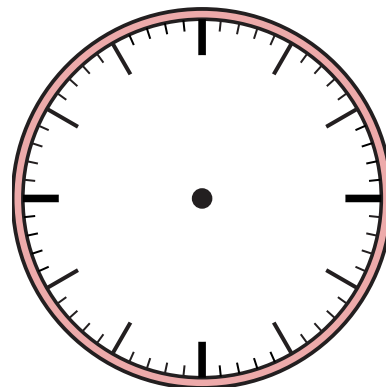
1) 3:44



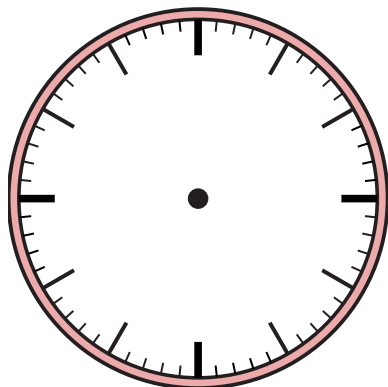
2) 9:19



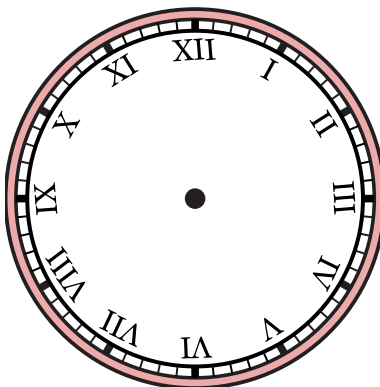
3) 9:51



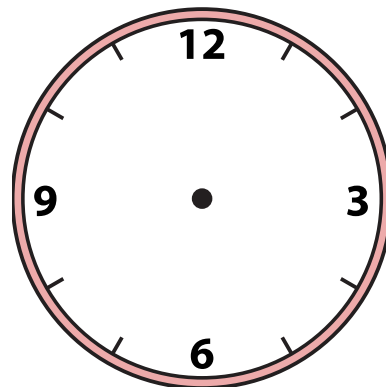
4) 6:42



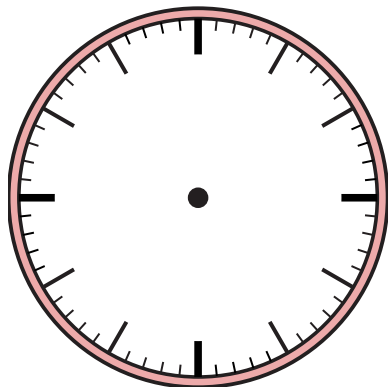
5) 11:38



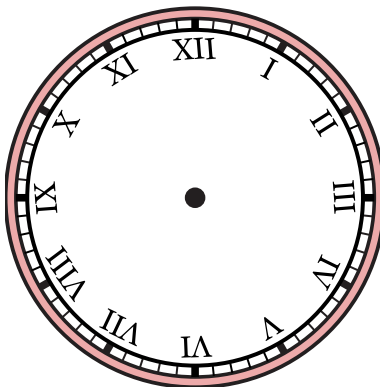
6) 12:40



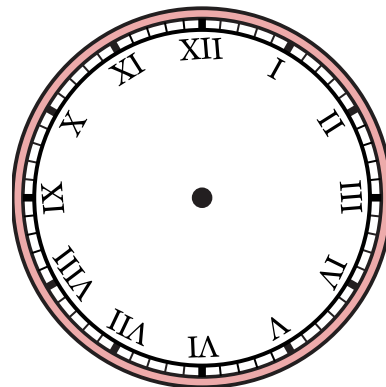
7) 4:40



8) 5:36



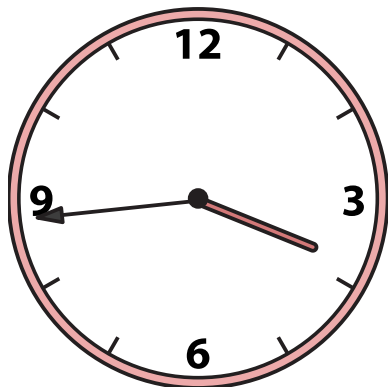
9) 6:00



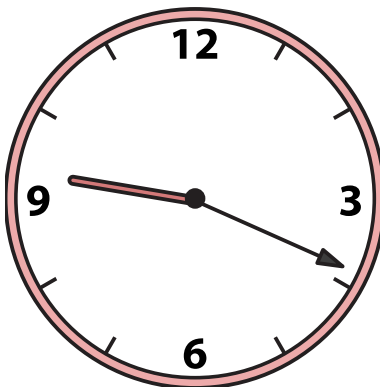


Zeichne den Stunden- und den Minutenzeiger auf die Uhr, sodass er die angezeigte Zeit darstellt.

1) 3:44



2) 9:19



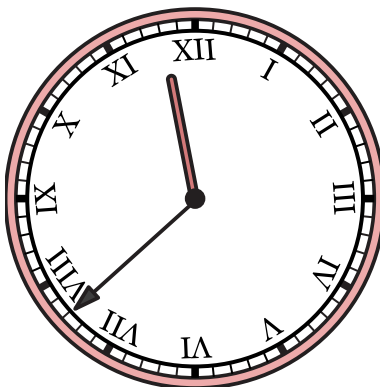
3) 9:51



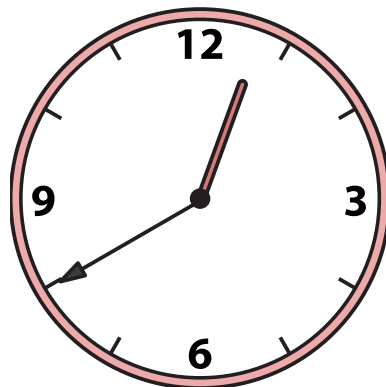
4) 6:42



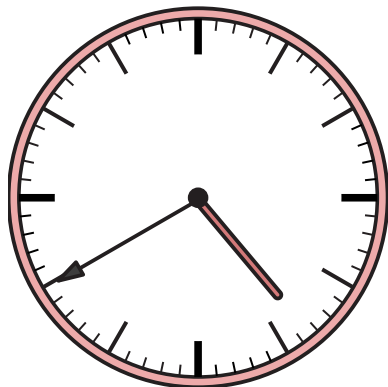
5) 11:38



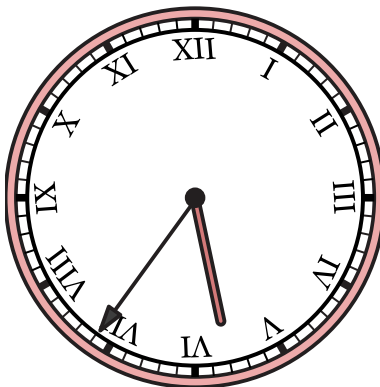
6) 12:40



7) 4:40



8) 5:36



9) 6:00

