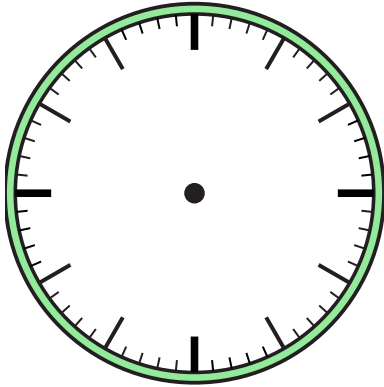


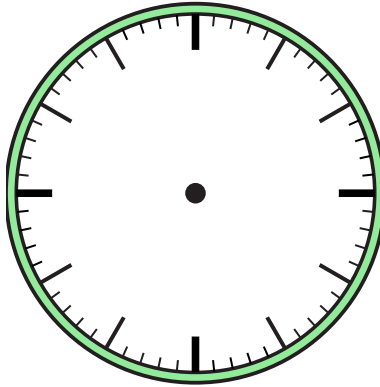


Zeichne den Stunden- und den Minutenzeiger auf die Uhr, sodass er die angezeigte Zeit darstellt.

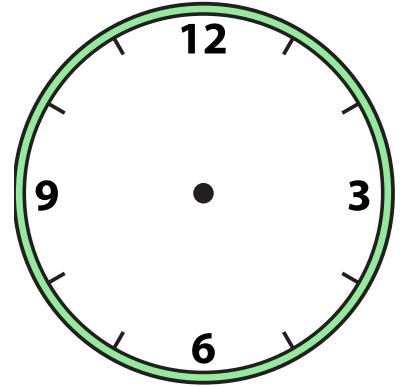
1) 11:30



2) 7:00



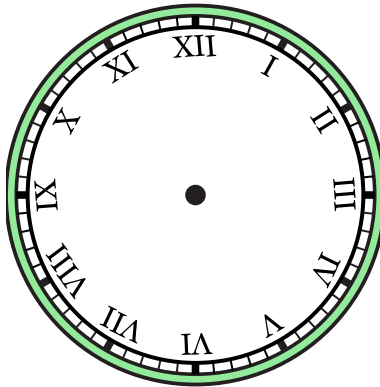
3) 8:00



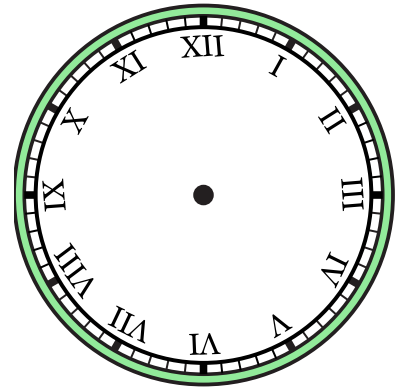
4) 10:00



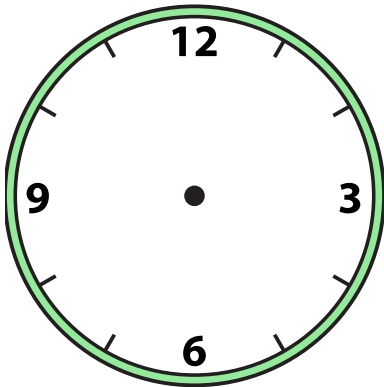
5) 2:30



6) 2:00



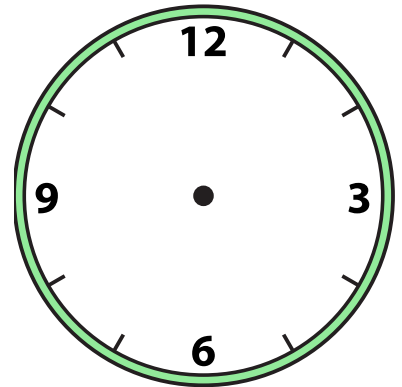
7) 12:30



8) 4:00



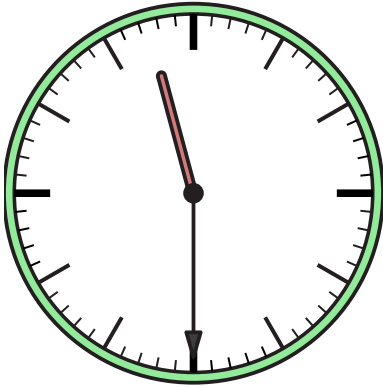
9) 12:30



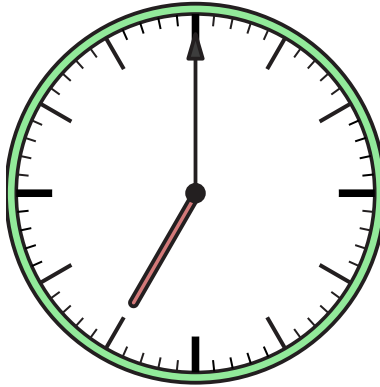


Zeichne den Stunden- und den Minutenzeiger auf die Uhr, sodass er die angezeigte Zeit darstellt.

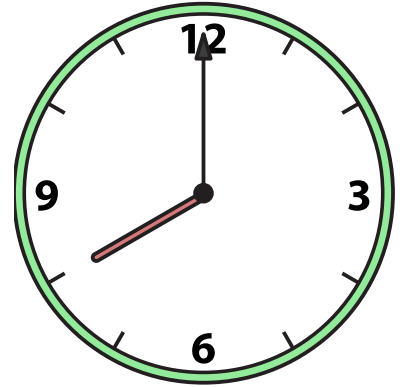
1) 11:30



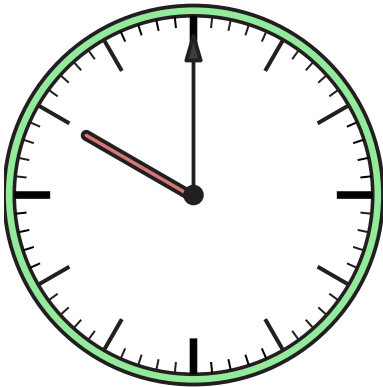
2) 7:00



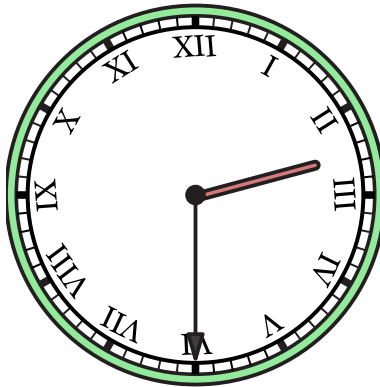
3) 8:00



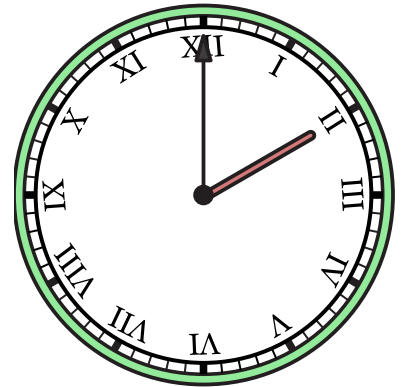
4) 10:00



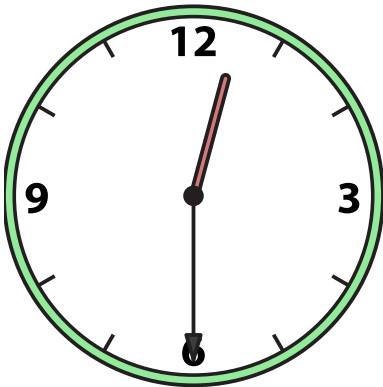
5) 2:30



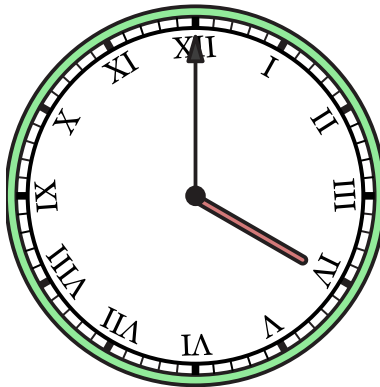
6) 2:00



7) 12:30



8) 4:00



9) 12:30

