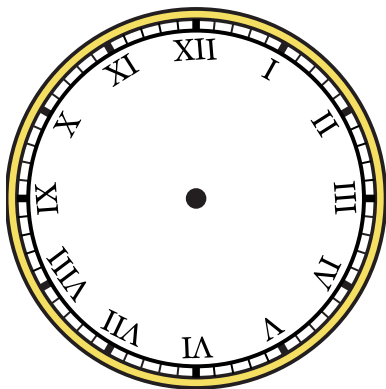


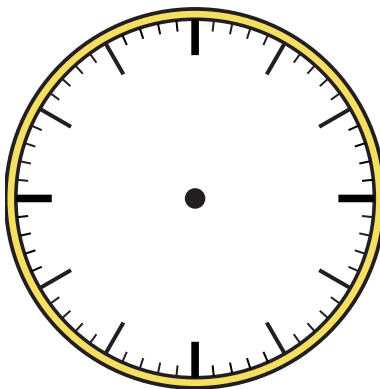


Zeichne den Stunden- und den Minutenzeiger auf die Uhr, sodass er die angezeigte Zeit darstellt.

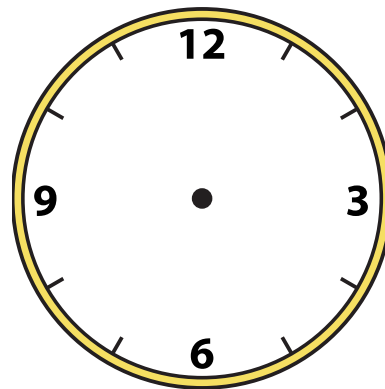
1) 4:00



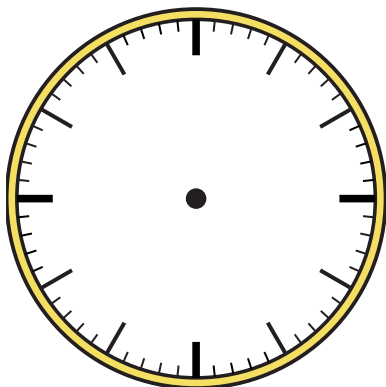
2) 1:30



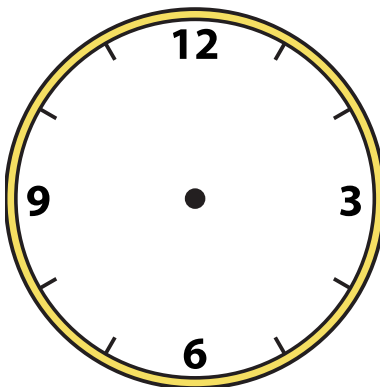
3) 12:15



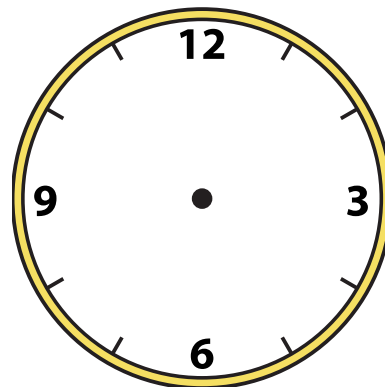
4) 3:30



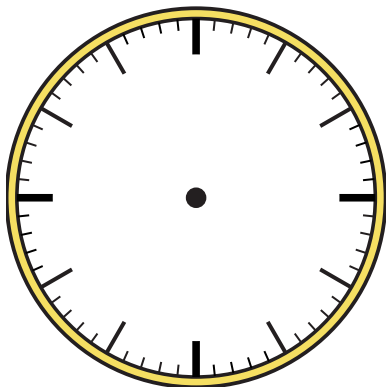
5) 1:45



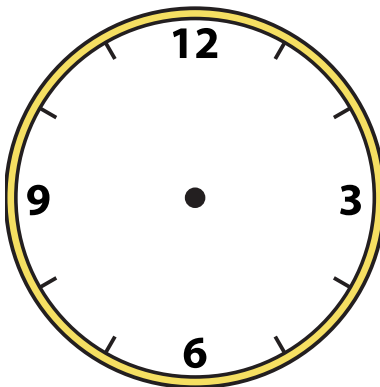
6) 6:45



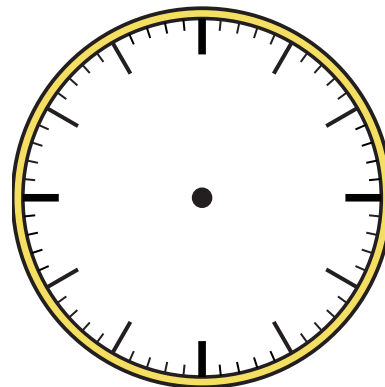
7) 7:00



8) 8:15



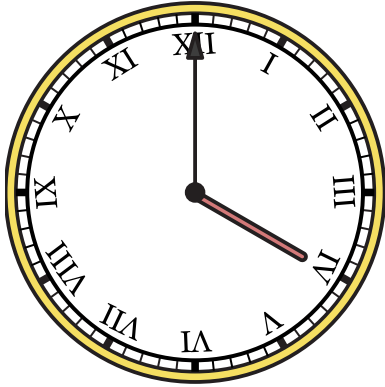
9) 9:00



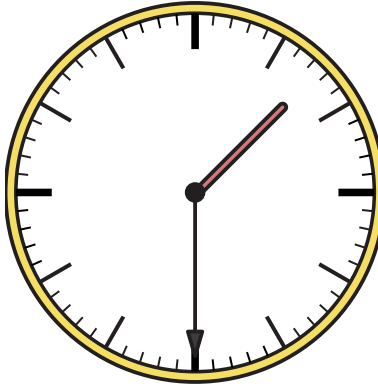


Zeichne den Stunden- und den Minutenzeiger auf die Uhr, sodass er die angezeigte Zeit darstellt.

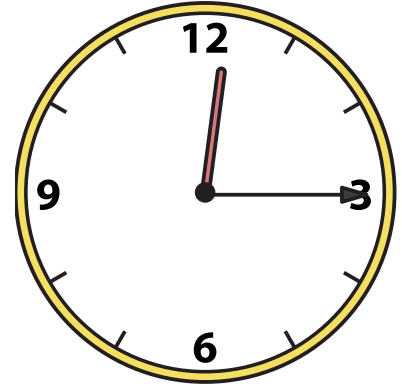
1) 4:00



2) 1:30



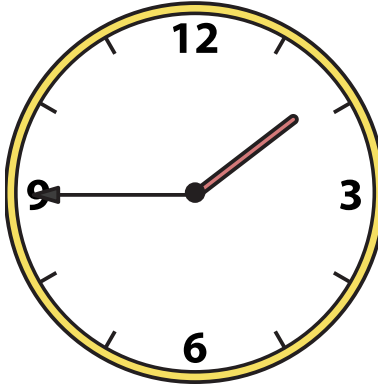
3) 12:15



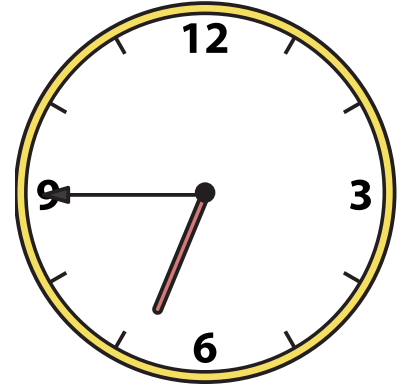
4) 3:30



5) 1:45



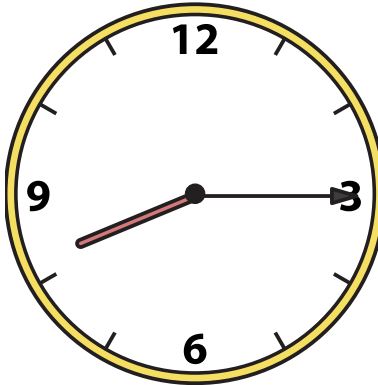
6) 6:45



7) 7:00



8) 8:15



9) 9:00

